

Orgsu Capp Interface 170629

Author: [SOLITEA BUSINESS SOLUTIONS LTD](#)

- 1.1. INTERFACE’S METHODS 3
 - 1.1.1 ACTIVATION OF NEW DEVICE AND SETTING TIME OFFSET 3
 - 1.1.2 UPDATE DATA OF DEVICE 4
 - 1.1.3 GET DATA OF DEVICE 4
 - 1.1.4 SET DEVICE TO CHECK POINT 5
 - 1.1.5 UPDATE CHECK POINT OF DEVICE 5
 - 1.1.6 RECORD START 5
 - 1.1.7 UPDATE START 6
 - 1.1.8 DELETE START 6
 - 1.1.9 ADDITIONAL SYNCHRONIZATION, SETTING TIME OFFSET 6
 - 1.1.10 RECORD ATHLETE’S TIME 7
 - 1.1.11 DELETE ATHLETE’S TIME 7
 - 1.1.12 RECORD THE END OF THE RACE 7
 - 1.1.13 DELETE THE END OF THE RACE 8
- 1.2. ERROR CODES 8
 - 1.2.1 ERROR CODES OF CAPP 8
 - 1.2.2 ERROR CODES OF ORGSU 8
 - 1.2.2.1 LIST OF ALL HANDLED ERRORS 9

1. INTERFACE

This chapter describes a universal interface CAPP for on-line communication MAPP with a target system (ORGSU, CTS, ...), which allows activation of devices, their synchronization and on-line transferring measured times of these devices.

WSDL of the web service:

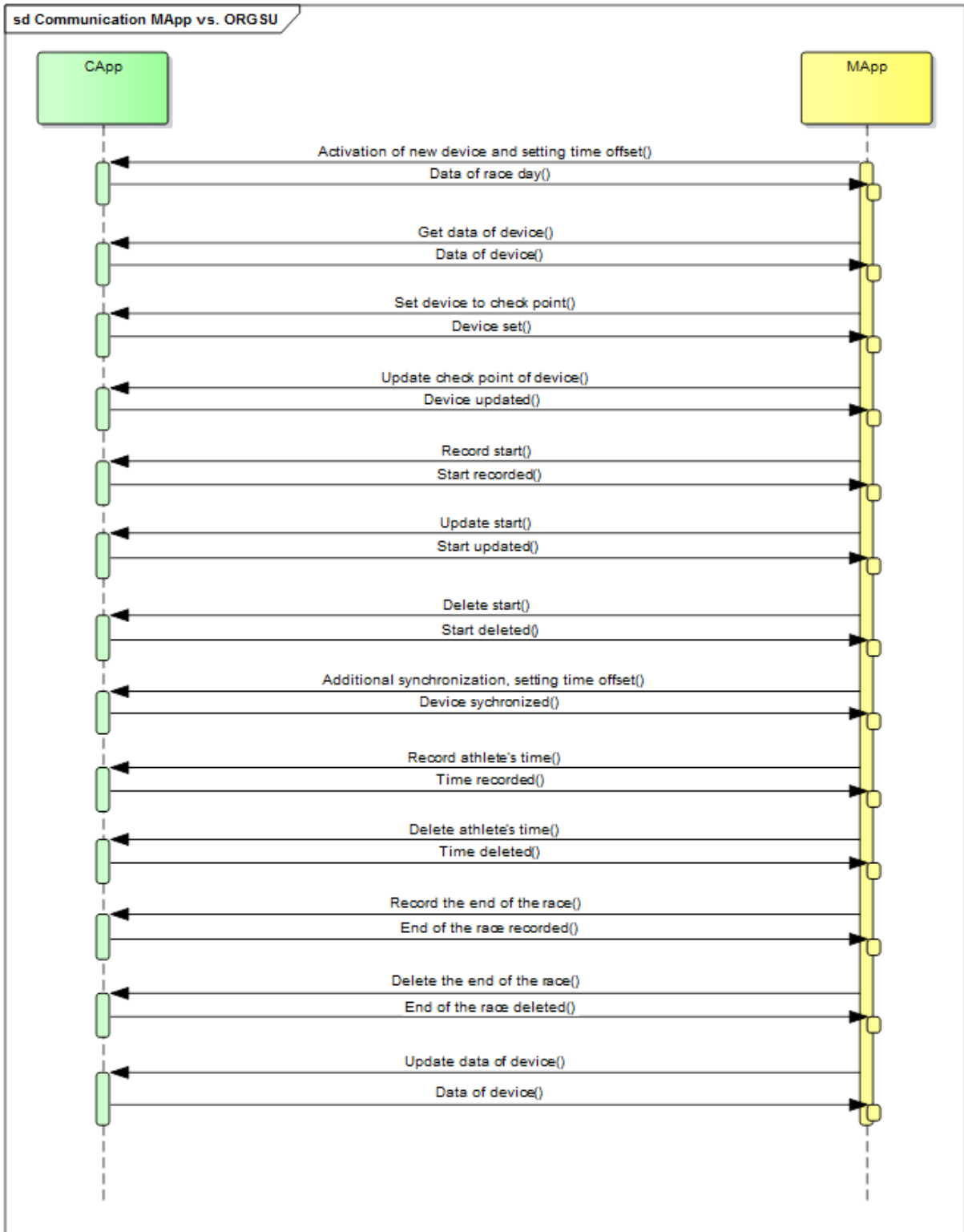


capp.wsdl

XSD for requests and responses:



xsd.zip



Particular methods of the web service (and their parameters) are described below.

1.1. INTERFACE'S METHODS

1.1.1 ACTIVATION OF NEW DEVICE AND SETTING TIME OFFSET

This method activates the device to given race day. According to the received time is set time offset of the device.

This method is called by all devices together (at least two devices). The time of the first received request is set as a “right” time (with offset = 0). Requests of all devices must be received till one minute from the first request (the limit is configurable in target system).

Response includes:

- Names of races, names of legs
- List of physical measure points
- List of starts for every race

Data in request:

- Security code (1)
- Private code (1)
- Race Id (0-1)
- Measure device id (1)
- Kind of measure device (1) - carpet, gate, mobile device, stopwatch
- Date and time (1)

Data in response:

- Token, list of physical measure points, data of race day: races, starts, legs, checkpoints; or ERROR code

1.1.2 UPDATE DATA OF DEVICE

This method returns up-to-date data of current race day and other requested information.

Data in request:

- Token (1)
- Race Id (0-1)
- Measure device id (1)

Data in response:

- List of physical measure points, data of race day: races, starts, legs, checkpoints; or ERROR code

1.1.3 GET DATA OF DEVICE

This method returns data of the device - time of synchronization, time offset, device id, list of used check points. This method is appropriate for checking time offset.

Data in request:

- Token (1)
- Measure device id (1)

Data in response:

- Data of the device or ERROR code

1.1.4 SET DEVICE TO CHECK POINT

This method sets the given physical check point to the device. This method can be called just once.

Data in request:

- Token (1)
- Measure device id (1)
- Physical check point id (1)
- Date and time (1)

Data in response:

- OK or ERROR code

1.1.5 UPDATE CHECK POINT OF DEVICE

This method allows changing physical check point of the device. This method can be called repeatedly.

Data in request:

- Token (1)
- Measure device id (1)
- Physical check point id (1)
- Date and time (1)

Data in response:

- OK or ERROR code

1.1.6 RECORD START

This method sets the start time of given start. This method can be called just once. The time of start is recorded for all athletes assigned to the start.

Data in request:

- Token (1)
- Measure device id (1)
- Race start id (1) (Guid)
- Date and time (1)

Data in response:

- OK or ERROR code

1.1.7 UPDATE START

This method allows updating the start time of given start. This method can be called repeatedly.

Data in request:

- Token (1)
- Measure device id (1)
- Race start id (1) (Guid)
- Date and time (1)

Data in response:

- OK or ERROR code

1.1.8 DELETE START

This method allows deleting the start time of given start. There is no way back for restoring the time.

Data in request:

- Token (1)
- Measure device id (1)
- Race start id (1) (Guid)

Data in response:

- OK or ERROR code

1.1.9 ADDITIONAL SYNCHRONIZATION, SETTING TIME OFFSET

This method allows adding new measure device to the given race day. Request of this method must be sent with request for device activation from new device. New device will get time offset according to time of this device. All new devices will be added, if their requests are received in one minute (the limit is configurable in target system).

Data in request:

- Token (1)
- Measure device id (1)
- Date and time (1)

Data in response:

- OK or ERROR code

1.1.10 RECORD ATHLETE'S TIME

This method saves athlete's time to given check point.

Data in request:

- Token (1)
- Measure device id (1)
- Physical check point id (1)
- Athlete's number (0-1)
- Athlete's chip (0-1) - *one of these two parameters must be entered*
- Date and time (0-1)
- Time (0-1) - *one of these two times must be entered*

Data in response:

- GUID of saved time or ERROR code

1.1.11 DELETE ATHLETE'S TIME

This method deletes athlete's time saved before.

Data in request:

- Token (1)
- Measure device id (1)
- GUID of saved time (1)

Data in response:

- OK or ERROR code

1.1.12 RECORD THE END OF THE RACE

This method saves the end of measuring. This method can be called just once.

Data in request:

- Token (1)
- Measure device id (1)
- Race id (1)

- **Date and time (1)**

Data in response:

- **OK or ERROR code**

1.1.13 DELETE THE END OF THE RACE

This method deletes the end of measuring. This method can be called repeatedly.

Data in request:

- **Token (1)**
- **Measure device id (1)**
- **Race id (1)**

Data in response:

- **OK or ERROR code**

1.2. ERROR CODES

1.2.1 ERROR CODES OF CAPP

error code	description
UNKNOWN_TARGET_SYSTEM	Unrecognized target system
REQUEST_SCHEMA_VALIDATION_ERROR	Request is not valid by WSDL/XSD
RESPONSE_SCHEMA_VALIDATION_ERROR	Response of target system is not valid by WSDL/XSD
GENERAL_ERROR	Unhandled exception

1.2.2 ERROR CODES OF ORGSU

error code	description
AUTH_ERROR	Wrong token in request – unable to authorize
WRONG_PARAMETER	A wrong parameter - it is not wrong parameter's type (type is checked by XSD), but e.g. nothing is found by it.
BUSINESS_ERROR	Business error
GENERAL_ERROR	Unhandled exception
DATA_VALIDATION_ERROR	Validation error occurred during saving an entity.

1.2.2.1 List of all handled errors

method	error code	error description	details
all except DeviceActivation	WRONG_PARAMETER	Timing device not found.	Not found by request.MeasureDeviceId
all except DeviceActivation	AUTH_ERROR	Authorization error	Unable to authorize by request.Token
AdditionalDeviceActivation	WRONG_PARAMETER	No Offset.	Measure Device does not have any Offset
AdditionalDeviceActivation	BUSINESS_ERROR	Configuration not found.	Error in Orgsu configuration
AdditionalDeviceActivation	BUSINESS_ERROR	Wait for synchronization.	
DeleteAthletesTime	WRONG_PARAMETER	Record with time not found.	Not found by request.RecordGuid
DeleteEnd	WRONG_PARAMETER	Race not found.	Not found by request.RaceId
DeleteEnd	WRONG_PARAMETER	End of timing is not defined; it may not be changed.	
DeleteStart	WRONG_PARAMETER	Start was not found.	Not found by request.RaceStartId
DeleteStart	WRONG_PARAMETER	Start is not defined; not possible to change.	
DeviceActivation	WRONG_PARAMETER	Race Day not found.	Not found by request.SecurityCode, request.PrivateCode
DeviceActivation	BUSINESS_ERROR	Configuration not found.	Error in Orgsu configuration
DeviceActivation	BUSINESS_ERROR	Invalid Security Key.	Security Key was not bought or is not valid
RecordAthletesTime	WRONG_PARAMETER	Timing point not found.	Not found by request.PhysicalCheckPointId
RecordAthletesTime	WRONG_PARAMETER	Application not	Not found by

		found.	request.AthleteNumber, request.AthleteChip
RecordAthletesTime	WRONG_PARAMETER	No Time Entered.	
RecordEnd	WRONG_PARAMETER	Race not found.	Not found by request.RaceId
RecordEnd	WRONG_PARAMETER	End of timing is already assigned.	
RecordStart	WRONG_PARAMETER	Start was not found.	Not found by request.RaceStartId
RecordStart	WRONG_PARAMETER	Start time is defined already.	
SetDeviceToCheckPoint	WRONG_PARAMETER	Timing point not found.	Not found by request.PhysicalCheckPo intId
SetDeviceToCheckPoint	WRONG_PARAMETER	Device is assigned to the Timing Point already.	
UpdateDeviceToCheckPoint	WRONG_PARAMETER	Timing point not found.	Not found by request.PhysicalCheckPo intId
UpdateDeviceToCheckPoint	WRONG_PARAMETER	Device is not assigned yet.	
UpdateDeviceToCheckPoint	WRONG_PARAMETER	Device is assigned to the Timing Point already.	
UpdateStart	WRONG_PARAMETER	Start was not found.	Not found by request.RaceStartId
UpdateStart	WRONG_PARAMETER	Start time is not defined yet.	